



Lincoln School District Budget Informational Meeting

February 12, 2024

www.lincolnsd.org

About the Lincoln School District

In May 2022, the Vermont State Board of Education approved Lincoln's withdrawal from the Mt. Abe Unified School District (MAUSD) and designated it as its own School District. In November 2022, the State Board of Education (SBE) took the additional step of designating Lincoln an independent supervisory district. Lincoln now has complete local control over the education of its students!



Lincoln School Board

Over the past year plus, Lincoln School District's five-member Board of Directors has been establishing the policies, systems, staffing, and administrative and technological infrastructure to ensure that the district was ready to assume full responsibility for our children's education beginning July 1, 2023.

	<u>Contact</u>	<u>Term Expiration</u>
Jeanne Albert, Chair	jalbert@lincolnsd.org	3/2025
Abby Reynolds, Vice Chair	areynolds@lincolnsd.org	3/2024
Mary Gemignani	mgemignani@lincolnsd.org	3/2025
Rob Backlund	rbacklund@lincolnsd.org	3/2026
Lea Calderon-Guthe	lcalderonguthe@lincolnsd.org	3/2024

Additional Speakers

- Amy Cole, Superintendent
- Tory Riley, Principal
- Brittany Gilman and Andy Soares White, financial consultants

Our Vibrant Learning Community

Lincoln School District

Lincoln, Vermont

Lincoln Voters, Families, Community



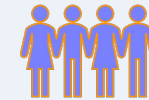
Board of Directors



Lincoln Pre-K students



Lincoln Secondary Students



Superintendent

District Administration



LCS Principal Teachers Support Staff



Lincoln Community School





LINCOLN
SCHOOL DISTRICT

Board Priorities that Informed Budget Development

- **Elementary Education:** Continuity of adult/child interactions at Lincoln Community School that build strong relationships and trust essential to a safe and creative learning environment
- **Secondary Education:** Engage and support Lincoln families and students so they are able to make informed and appropriate choices
- **Academic opportunities and systems** that facilitate and support all learners
- **District business office:** Continue to build strong and sustainable operational structures that reflect new district-level Prek-12 responsibilities
- **Community:** Support and encourage programs that align with our deep sense of connection and the empowering possibilities of small, community-based schools
- **Voters:** The collective will of Lincoln voters brought LSD into existence for the benefit of all. A core district responsibility is crafting a responsible budget that is true to our values, respects our capacities, and is affordable for taxpayers.



LINCOLN
SCHOOL DISTRICT

FY25 Budget Considerations

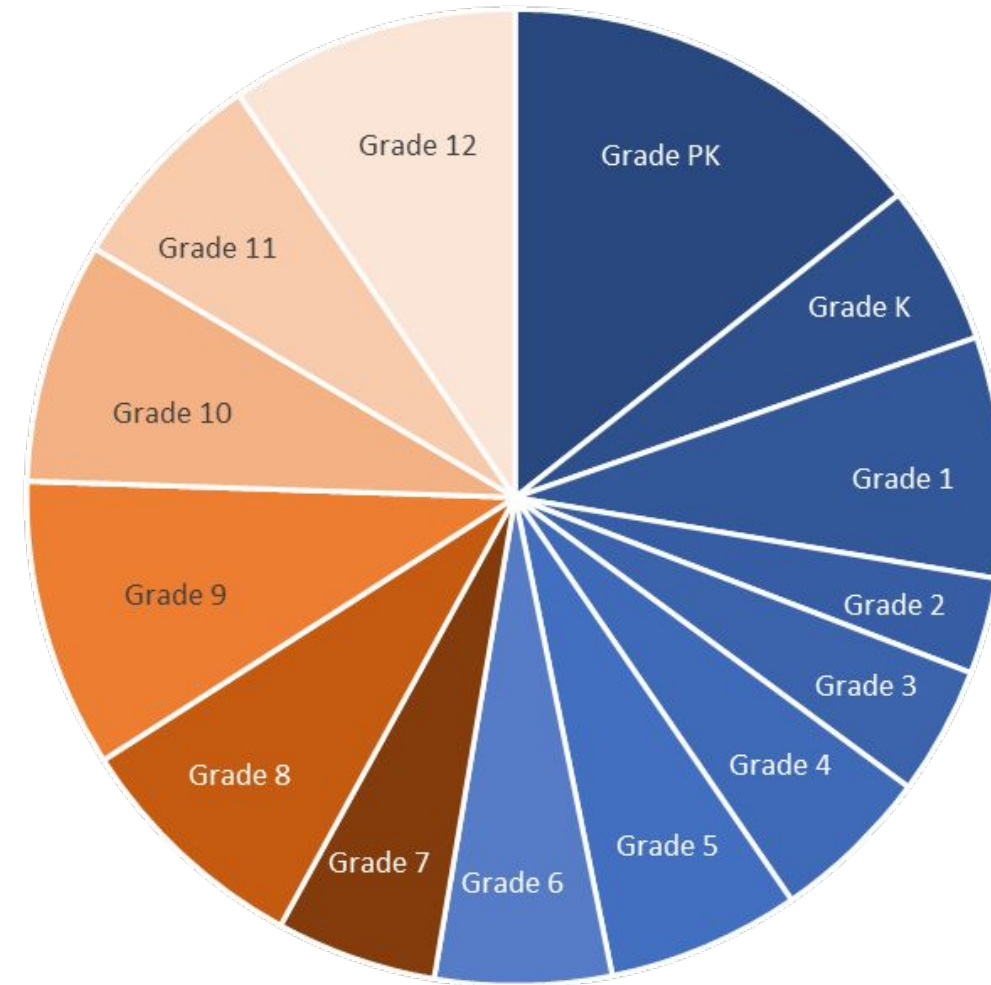
- Planning for anticipated increased enrollment
- Increases in health insurance (16.9%) and cost of living expenses
- Ensuring continuity of programming and services while absorbing additional district-level requirements (shifting from K-6 to Prek-12)
- Tuition for grades 7 to 12 (82 students estimated for SY 24/25)
- Implementation of Act 127
 - Weighted pupil count ("LTW ADM"): 301.39
 - Tax cap provision [possibly replaced by a tax discount]
- Property Yield (final value set by the legislature)
- Lincoln's town-wide reappraisal and the impact on the Common Level of Appraisal (CLA)

Prek-12 LSD Student Enrollment (SY 23/24)



LINCOLN
SCHOOL DISTRICT

Grade	Number of students	Grade	Number of students
PK (3-4 yr olds)	27	Gr. 7	10
K	10	Gr. 8	15
Gr. 1	15	Gr. 9	18
Gr. 2	6	Gr. 10	15
Gr. 3	8	Gr. 11	13
Gr. 4	10	Gr. 12	18
Gr. 5	12		
Gr. 6	11	All grades	188



Pre-K/Preschool

[Act 166](#) of 2014 provides access to publicly-funded prekindergarten education for Vermont students (up to 10 hours/week).

There are currently 27 students in PreK (ages 3 and 4) in Lincoln.

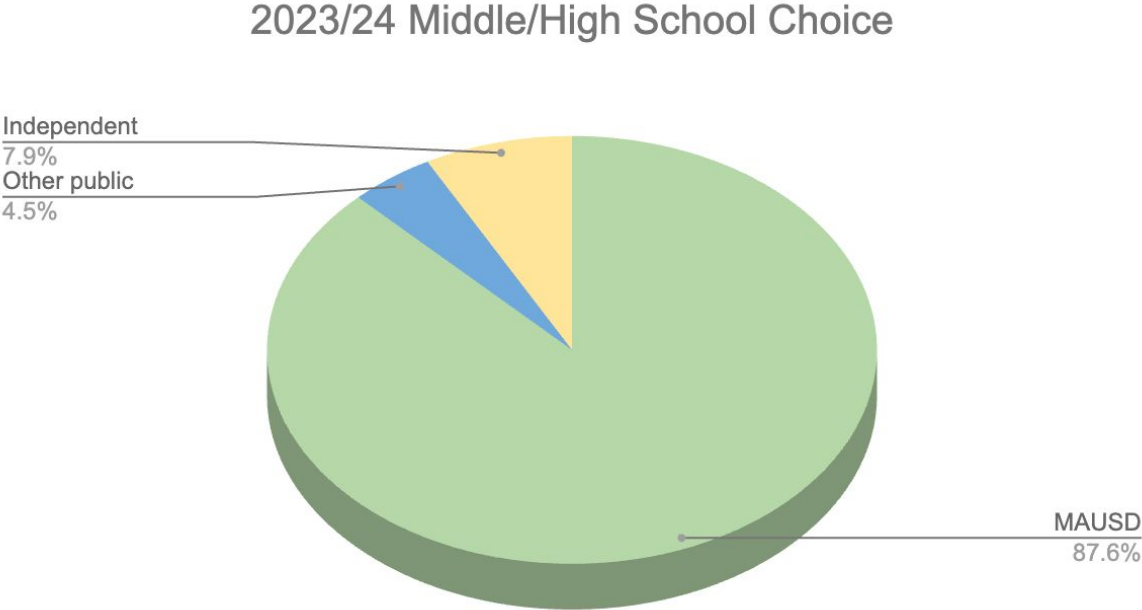


Grades 7-12 Student Enrollment (SY 23/24)

Lincoln School District is a choice school district for students in grades 7 to 12. While the majority of Lincoln students in these grades attend Mt. Abe middle/high school, families may choose to enroll their student in any secondary school. The district pays tuition only for students who attend public or approved independent schools.

In school-year 23/24, 89 students in grades 7-12 attend the following schools:

- 78 (87.6%) Mt. Abe middle/high school;
- 4 (4.5%) other public secondary schools;
- and
- 7 (7.8%) approved independent schools



Grades 7-12 Choice (23/24): Tuition Rates

Each Vermont public school sets its own tuition rate, which is available for budget planning by mid-January. Approved independent schools also set their own tuition rates. By law, sending school districts pay no more than the VT announced average tuition for public, union secondary schools, which is set each spring.

School	SY 23/24 Secondary Tuition	SY 24/25 Secondary Tuition
Vergennes M/HS	\$18,228	\$22,504
CVU M/HS	\$17,804	\$20,889
Mt. Abe M/HS	\$20,956	\$21,441
MUMS/HS	\$21,736	\$20,200
VT Average	\$18,266	TBD

Lincoln's Increasing Enrollment

GRADE	23-24	24-25	25-26	26-27	27-28
K	10	14	15	9	13
1	15	10	14	15	9
2	6	15	10	14	15
1-2	21	25	24	29	24
3	8	6	15	10	14
4	10	8	6	15	10
3-4	18	14	21	25	24
5	12	10	8	6	15
6	11	12	10	8	6
5-6	23	22	18	14	21
TOTAL	72	75	78	77	82



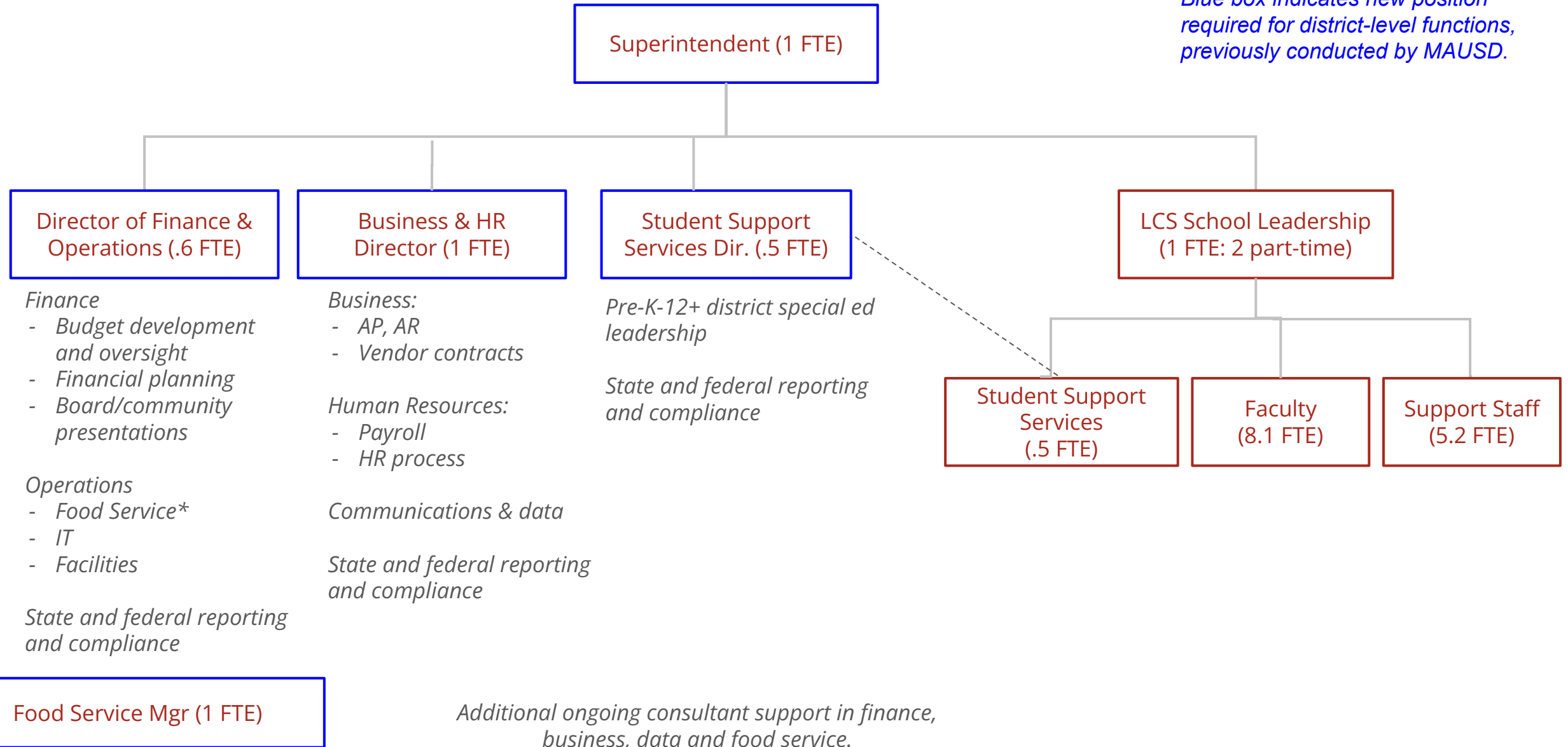
Staffing Changes

Beginning July 1, 2023, responsibilities expanded from supporting students and families K-6 to Prk-12 and the new district absorbed all district roles and tasks that had previously been overseen by MAUSD.

	July 2023	July 2024	Change
Faculty	8.1	9.1	1
Staff	5.375	4.375	-1
Admin	2	3.5	1.5
	15.475	16.975	1.5

Lincoln School District Staff Chart (Feb 2024)

Blue box indicates new position required for district-level functions, previously conducted by MAUSD.



FY25 Proposed Budget





FY25 Proposed Budget

	FY24	FY25	
Revenue from other sources	\$393,450.00	\$503,482.36	+ 28.0% anticipated

	FY24	FY25	
Expenses	\$4,645,130.00	\$4,927,939.57	+ 6.1% anticipated



Contributing Factors:

- Addition of superintendent and business office personnel to absorb new district responsibilities
- Addition of grades 1-2 multi-age classroom teacher to accommodate increased enrollment
- Elimination of tech center tuition (included in general tuition)
- Set aside funds for contingency planning
- Increase in health care costs
- Reassignment of wage costs to appropriate categories
 - Athletics moved to Regular Education
 - Wages for librarian moved to Library

The full budget can be found on our website: <https://lincolnsd.org/budget>.

Budget Detail

<https://lincolnsd.org/budget>

	FY24	FY25	Change
Administration	\$387,458.00	\$498,560.28	\$111,102.28
Athletics/Extracurricular	\$47,002.00	\$7,500.00	-\$39,502.00
Facilities	\$249,499.00	\$282,118.99	\$32,619.99
Fiscal Services	\$211,768.00	\$226,486.97	\$14,718.97
Guidance	\$23,068.00	\$20,720.89	-\$2,347.11
Library	\$6,750.00	\$65,945.50	\$59,195.50
Nurse	\$38,347.00	\$33,716.78	-\$4,630.22
Regular Education	\$2,893,107.00	\$3,002,461.99	\$109,354.99
Special Education	\$241,491.00	\$273,780.67	\$32,289.67
Student Support	\$31,000.00	\$28,000.00	-\$3,000.00
Tech Center Tuition	\$118,500.00	\$0.00	-\$118,500.00
Technology	\$80,000.00	\$82,000.00	\$2,000.00
Transfer to Reserves	\$20,000.00	\$80,000.00	\$60,000.00
Transportation	\$160,000.00	\$160,000.00	\$0.00
Mentor Program	\$12,140.00	\$16,647.50	\$4,507.50
Food Service	\$125,000.00	\$150,000.00	\$25,000.00
Total	\$4,645,130.00	\$4,927,939.57	\$282,809.57

Anticipated Revenue

<https://lincolnsd.org/budget>

	FY24 Budget	FY25 Proposed Budget	FY25 to FY24 Difference
Education Spending Grant	\$4,125,375	\$4,424,457	\$299,082
State on Behalf Pmt - Tech Ctr	\$51,552	\$0	-\$51,552
Act 173 Census Block Grant	\$137,250	\$397,482	\$260,232
Small Schools Grant	\$115,000	\$0	-\$115,000
State Aid for Transportation	\$43,500	\$43,500	\$0
Forestry Grant Revenue	\$6,000	\$6,000	\$0
Rentals	\$3,000	\$0	-\$3,000
Misc Other Local Revenue	\$86,000	\$25,000	-\$61,000
Misc Local Revenue	\$2,500	\$11,500	\$9,000
Interest - General Fund	\$200	\$20,000	\$19,800
Investment Earnings	\$0	\$0	\$0
Total	\$4,570,377	\$4,927,940	\$357,563

Factors Influencing Homestead Tax Rate

- Adopted school budget
- New state educational funding legislation - Act 127
 - Long-term Weighted Average Daily Membership (LTWADM)
- Property Tax Yield
- Common Level of Appraisal (CLA)

Estimated homestead tax rate: Calculation steps			FY24	FY25	Change	% Change
Step 1: Education spending		Budgeted expenditures	\$ 4,645,130.00	\$ 4,927,939.57	\$ 282,809.57	6.09%
	Minus	Local Revenue	\$ 468,203.00	\$ 503,482.36	\$ 35,279.36	7.54%
	Equals	Education spending	\$ 4,176,927.00	\$ 4,424,457.21	\$ 247,530.21	5.93%
Step 2: Spending per pupil	Divided by	<i>LSD weighted pupils</i> (1)	303.81	301.39	-2.42	-0.80%
	Equals	Spending per pupil	\$ 13,748.48	\$ 14,680.17	\$ 931.69	6.78%
Step 3: Equalized tax rate	Divided by	<i>Property Yield</i> (2)	n/a	\$ 9,629.00		
	Equals	Equalized homestead tax rate	1.44	1.52	0.089	6.18%
Step 4: Act 127-adjusted tax rate	Act 127: FY25 equalized homestead tax rate capped at FY24 equalized tax rate + 5%					
		FY25 Equalized homestead rate after cap applied	1.44	1.51	0.07	5.00%
Step 5: CLA-adjusted tax rate	Divided by	<i>Lincoln CLA</i> (3)	87.72%	100%		
	Equals	Homestead tax rate	1.64	1.51	-0.13	-7.89%



LINCOLN
SCHOOL DISTRICT

Update on Town-wide Reappraisal and CLA

Why/how it's different this year:

From the **VT Tax Department's Property Valuation and Review 2024 Annual Report**:
In the year that a town updates their Grand List values and completes a reappraisal, they will receive a recalculated CLA for the purposes of setting their education property tax rates, per 32 V.S.A. § 5406(c).

Also, from the VT Tax Department Education **Tax Rate Calculations FAQs** page:

My town is completing a reappraisal this year. What will our Common Level of Appraisal (CLA) be and what will happen to my tax bill?

In a reappraisal year, the CLA for a town is calculated differently. If the Director of Property Valuation and Review has certified that a town has completed a town-wide reappraisal, the common level of appraisal (CLA) for that town is equal to its new grand list value from the reappraisal divided by its most recent equalized grand list value for purposes of determining education property tax rates.

Q&A



LINCOLN COMMUNITY SCHOOL
1957

Contacts

School Board	Contact
Jeanne Albert, Chair	jalbert@lincolnsd.org
Abby Reynolds, Vice Chair	areynolds@lincolnsd.org
Mary Gemignani	mgemignani@lincolnsd.org
Rob Backlund	rbacklund@lincolnsd.org
Lea Calderon-Guthe	lcalderonguthe@lincolnsd.org
Administration	
Amy Cole, Superintendent	acole@lincolnsd.org
Tory Riley, Principal	triley@lincolnsd.org

THANK YOU!!

**We appreciate your
time!**

Any questions about this presentation or anything else, feel free to contact the Lincoln School District Board.

The public is welcome to attend a School Board meeting Mondays @ 7PM at the Town Office

Please visit the school website:

www.lincolnsd.org